

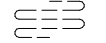










## Renvooi:

### Algemeen:

- mv mechanische ventilatie
- # veiligheidsglas
- \* colorbel
- ▼ 30 min. brandwerend glas, van buiten naar binnen
- ▼▼ 30 min. brandwerend glas, van buiten naar binnen en van binnen naar buiten

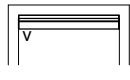
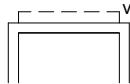
### Installaties:

-  vermoedelijk plaats en afmeting radiator
-  verdeler vloerverwarming
-  ruimte voorzien van vloerverwarming
-  afzuigpunt mechanische ventilatie (plafond)
-  afzuigpunt mechanische ventilatie (wand)
-  douche
-  kraan  = gevelaanzicht
-  draingoot
-  MV box
-  omvormer PV-panelen

### Deuren:

-  schuifdeur

### Ventilatie:

-  ventilatiooster op het glas
-  verborgen ventilatiooster achter gevelbekleding


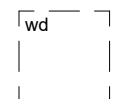
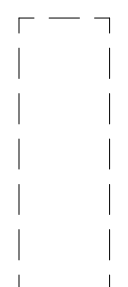

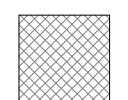
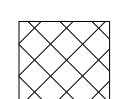
### Elektra:

-  rookmelder
-  utp aansluitpunt UTP-RJ45
-  th thermostaat
-  thv thermostaat vloerverwarming
-  drukknoop deurbel  = gevelaanzicht
-  zoemer deurbel
-  plafondlichtpunt
-  wandlichtpunt  = gevelaanzicht
-  schakelaar
-  serieschakelaar
-  wisselschakelaar
-  wandcontactdoos enkel
-  wandcontactdoos dubbel
-  meterkast
-  ws werkschakelaar tbv zonnepanelen

### Wanden:

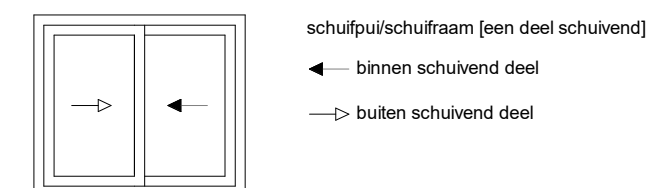
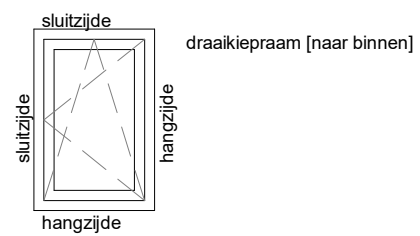
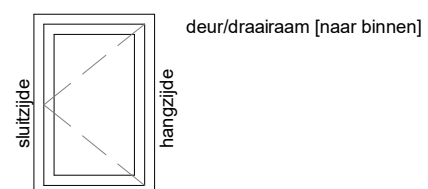
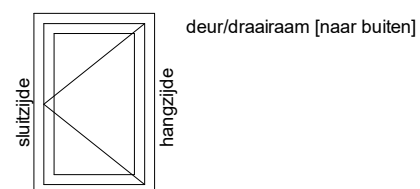
-  gipsblokken 7cm
-  gipsblokken zwaar 7cm
-  gipsblokken 10cm


### Overig:

-  opstelplaats wasmachine
-  opstelplaats wasdroger
-  plaatsingmogelijkheid keukenblok
-  kruipluik
-  natuurinclusieve voorzieningen
-  krijtstreep

### Draairichting ramen / deuren:

hangzijde = scharnierzijde



project  
 **Arnhem Gashouderskwartier fase 2**

omschrijving  
**renvooi**

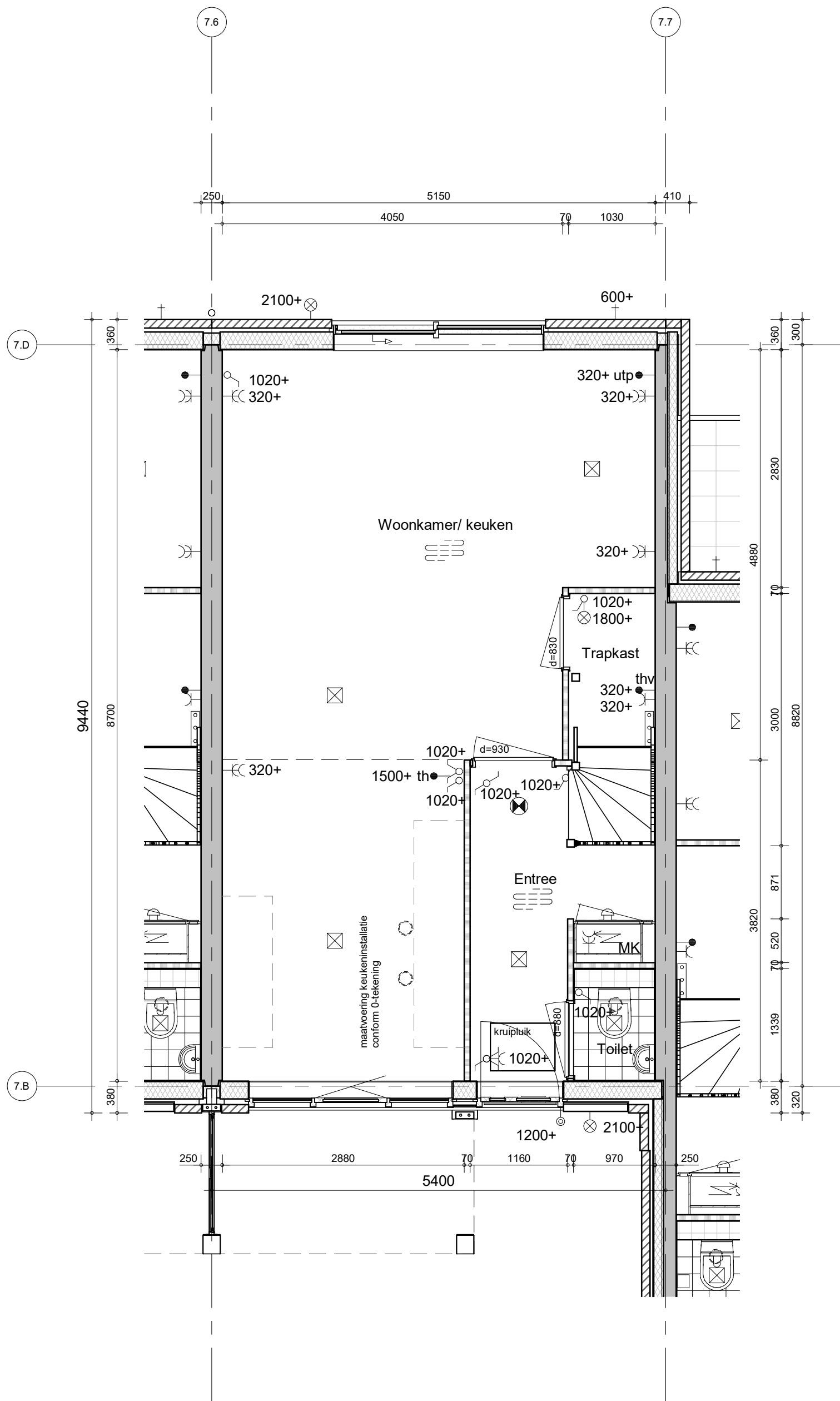
BAM Advies & Engineering  
 Runnenburg 12  
 Postbus 54  
 3980 CB Bunnik  
 (030) 6598933

getekend  
**EOn**  
 status  
**definitief**

schaal  
**1:50**  
 datum  
**30-09-2020**

project nr  
**9174**  
 tekening nr  
**V-208**

wijz.



project  
**Arnhem Gashouderskwartier fase 2**

BAM Advies & Engineering  
 Runnenburg 12  
 Postbus 54  
 3980 CB Bunnik  
 (030) 6598933

omschrijving  
**type Hk2**  
**begane grond**  
**bouwnummer 51**

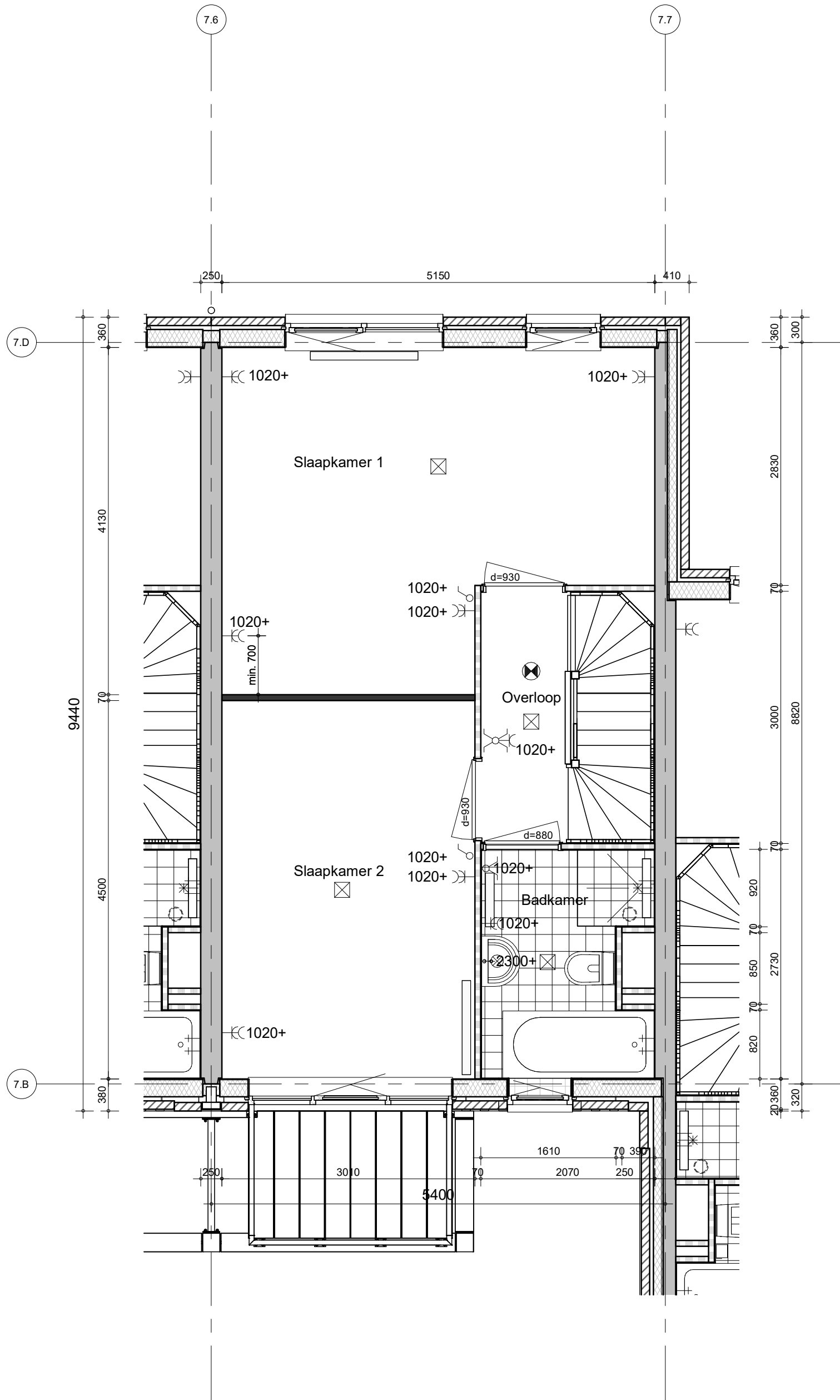
getekend  
**EOn**  
 status  
**definitief**

schaal  
**1:50**  
 datum  
**30-09-2020**

project nr  
**9174**  
 tekening nr

**V-461**

wijz.



project  
**Arnhem Gashouderskwartier fase 2**

BAM Advies & Engineering  
 Runnenburg 12  
 Postbus 54  
 3980 CB Bunnik  
 (030) 6598933

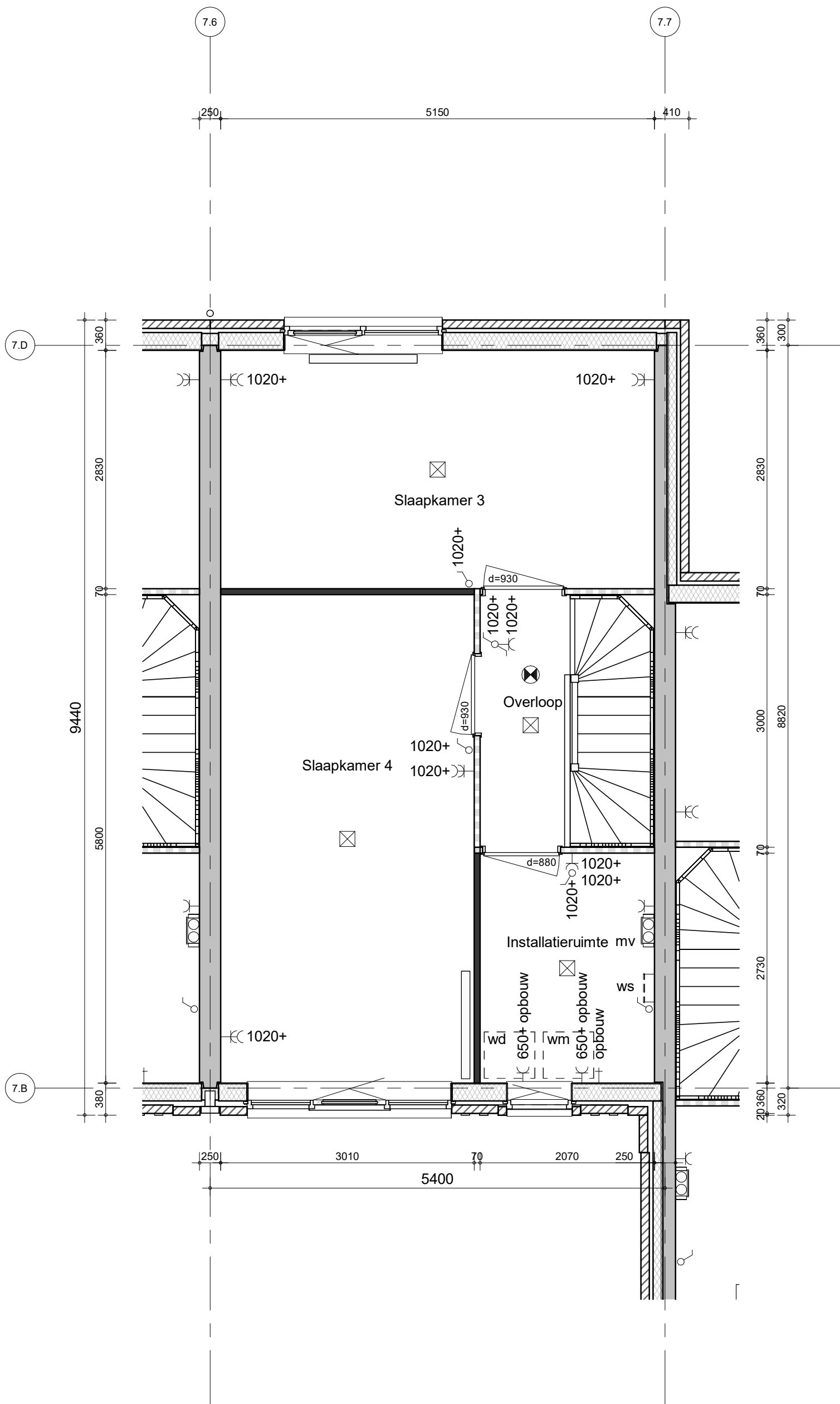
omschrijving  
**type Hk2**  
**1e verdieping**  
**bouwnummer 51**

getekend  
**EOn**  
 status  
**definitief**

schaal  
**1:50**  
 datum  
**30-09-2020**

project nr  
**9174**  
 tekening nr  
**V-462**

wijz.



project  
**Arnhem Gashouderskwartier fase 2**

BAM Advies & Engineering  
 Runnenburg 12  
 Postbus 54  
 3980 CB Bunnik  
 (030) 6598933

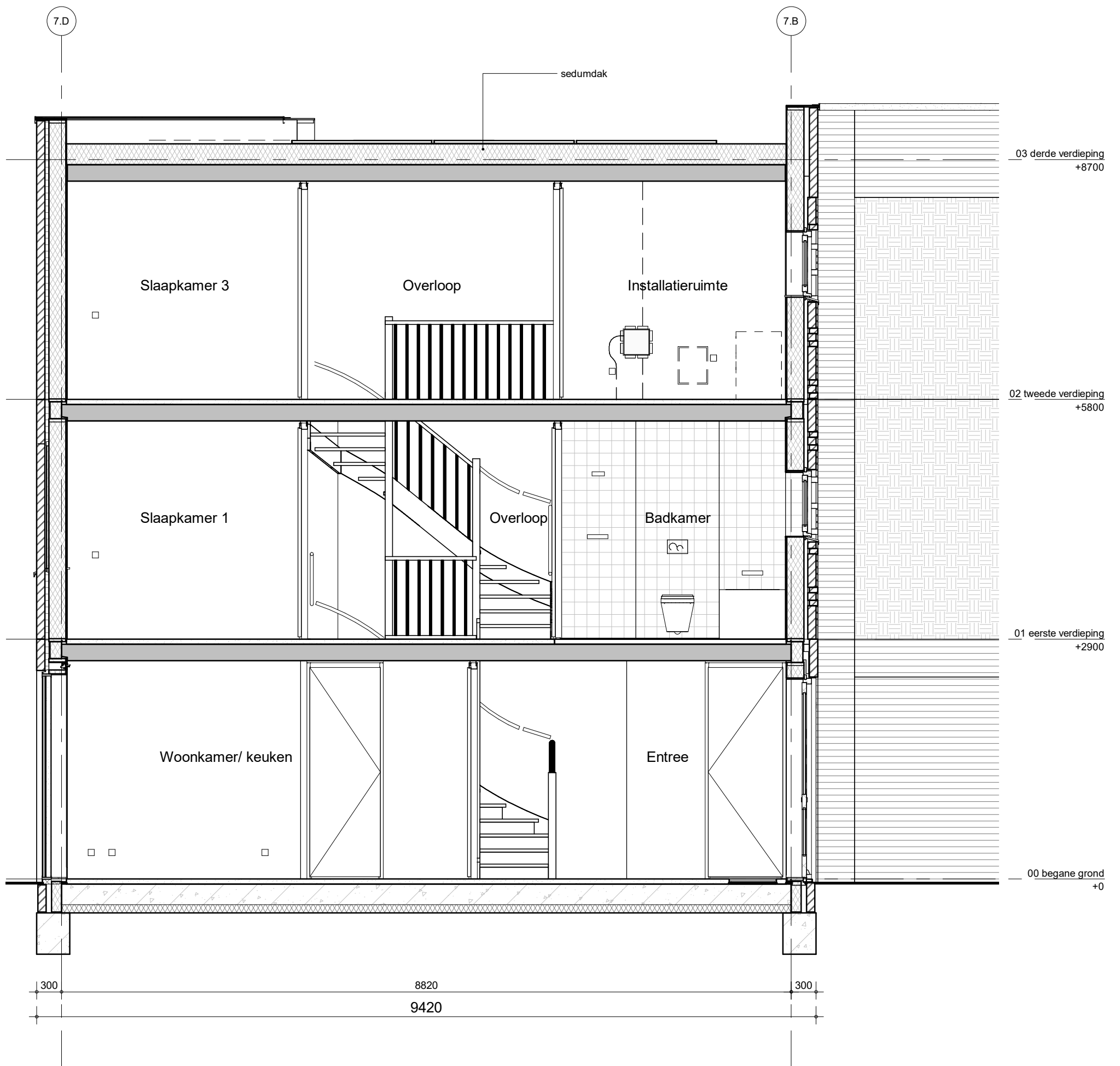
omschrijving  
**type Hk2**  
**2e verdieping**  
**bouwnummer 51**

getekend  
**EOn**  
 status  
**definitief**

project nr  
**9174**  
 tekening nr  
**V-463**

schaal  
**1:50**  
 datum  
**30-09-2020**

wijz.



BAM Advies & Engineering  
 Runnenburg 12  
 Postbus 54  
 3980 CB Bunnik  
 (030) 6598933

project  
 Arnhem Gashouderskwartier fase 2

omschrijving  
 type Hk2  
 doorsnede  
 bouwnummer 51

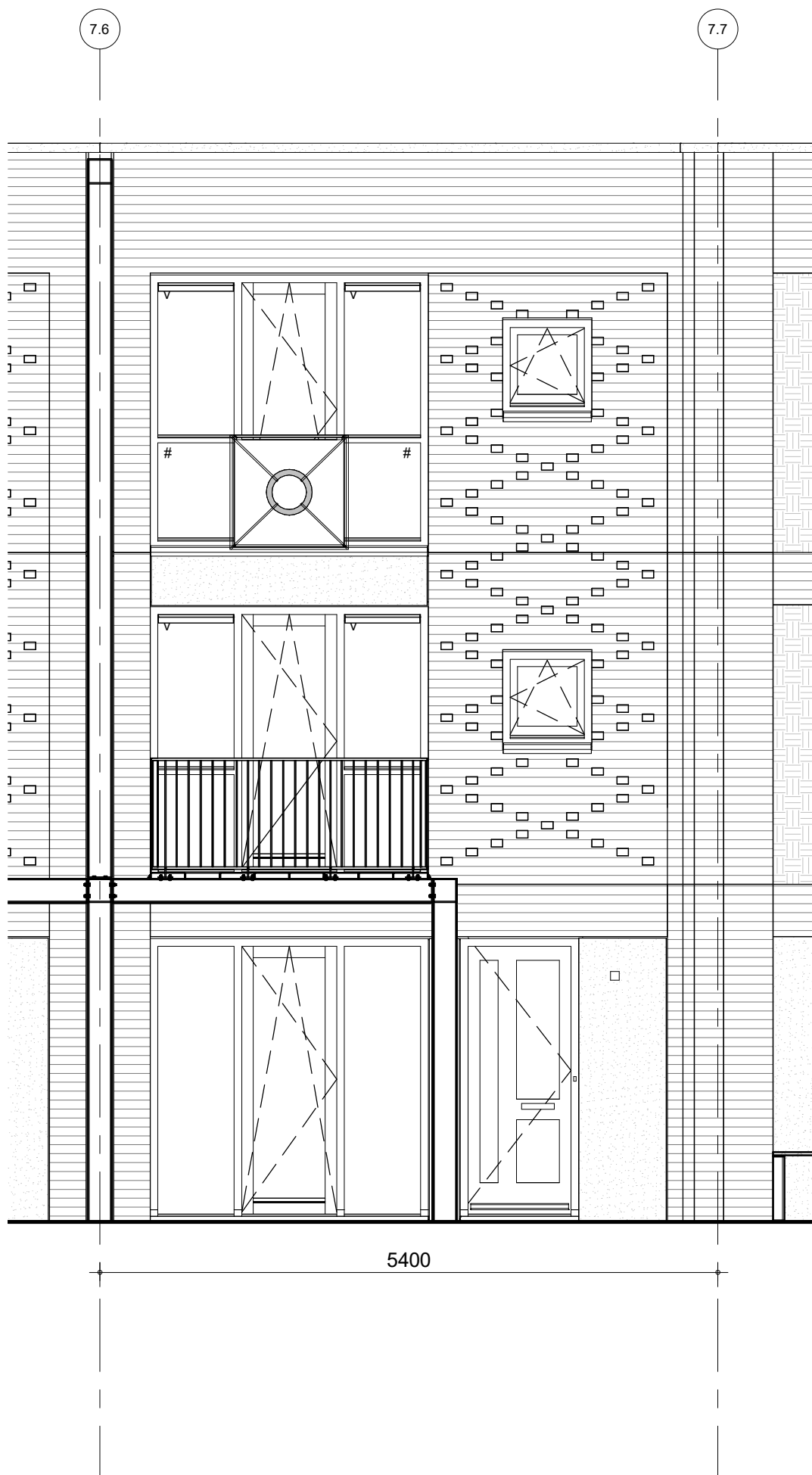
getekend  
 LMu  
 status  
 definitief

project nr  
 9174  
 tekening nr  
**V-464**

schaal  
 1:50  
 datum  
 30-09-2020

wijz.

formaat: A3



BAM Advies & Engineering  
 Runnenburg 12  
 Postbus 54  
 3980 CB Bunnik  
 (030) 6598933

project

Arnhem Gashouderskwartier fase 2

omschrijving

type Hk2  
 voorgevel  
 bouwnummer 51

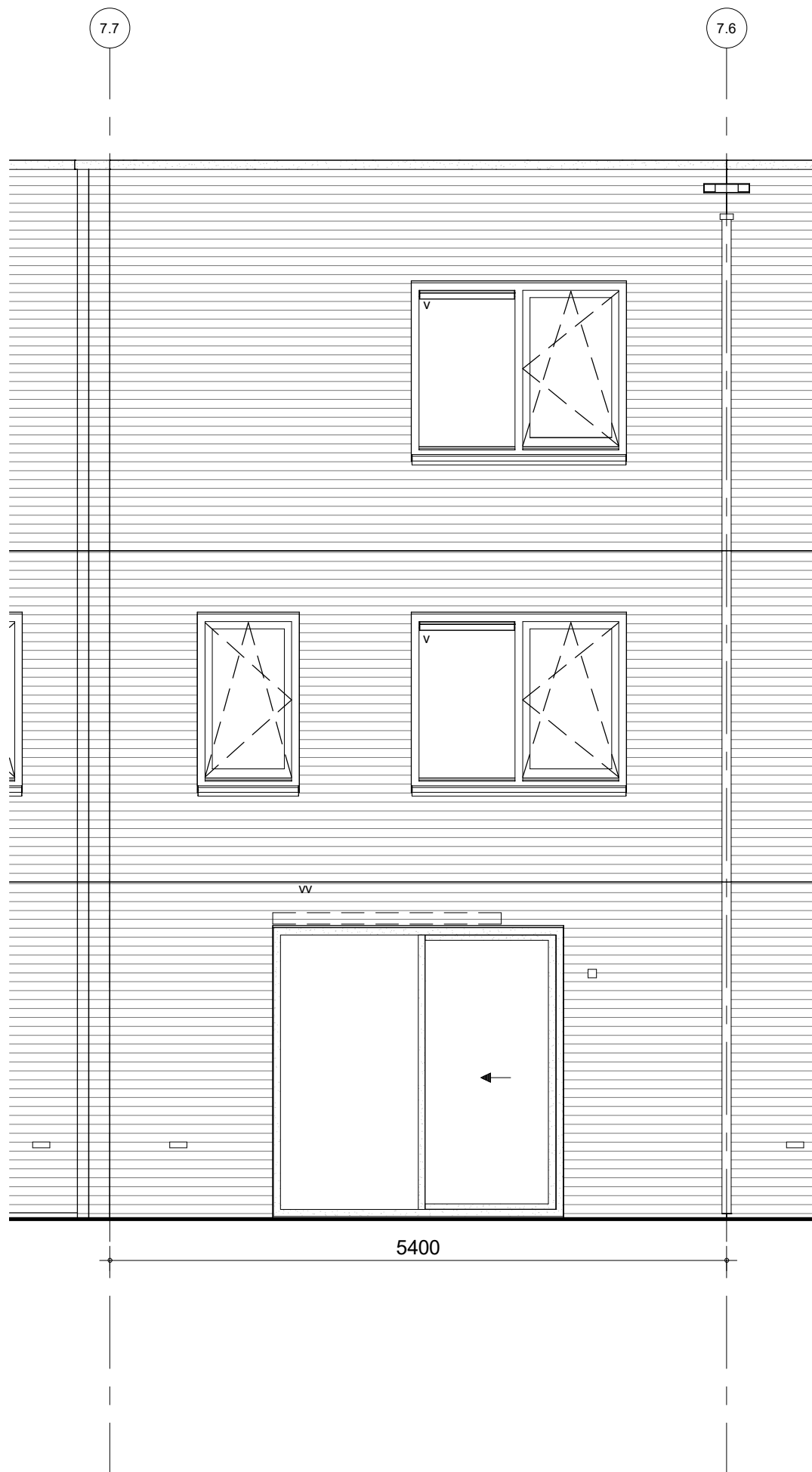
getekend  
 EOn  
 status  
 definitief

schaal  
 1:50  
 datum  
 26-10-2020

project nr  
 9174  
 tekening nr

**V-465**

wijz.



BAM Advies & Engineering  
 Runnenburg 12  
 Postbus 54  
 3980 CB Bunnik  
 (030) 6598933

project

Arnhem Gashouderskwartier fase 2

omschrijving

type Hk2  
 achtergevel  
 bouwnummer 51

getekend  
 EOn  
 status  
 definitief

schaal  
 1:50  
 datum  
 30-09-2020

project nr  
 9174  
 tekening nr

**V-466**

wijz.